

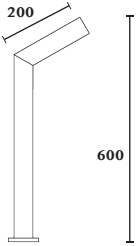
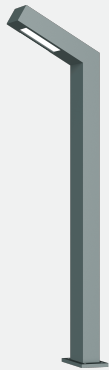
SETTE

SETTE



Technical Data

Application Category	Bollard
Wattage	18w
Source Lumen	1920LM
Ingress Protection	IP65
Material	Aluminium Extrusion And Solid Aluminium Parts.
Coatings	"Weather Protect" High Grade Pure Polyester, Outdoor Powder Coating.
Light Source	8 x High Power Led
Life Span	50000 hrs*
Screws	Stainless steel
Power Supply	Integral 230vAC/24vDC
Gasket	High Grade Long Lasting Silicon Gasket.
Glass	High Grade PMMA Clear Diffuser.
Cable Gland	N/A
Power Cable	Cable Not Included.
Dimension	Width - 250 mm, Height - 600mm / 900mm
Gross Weight	-



Features

- Solid Aluminium Body.
- High Efficiency Optical System.
- High Grade PMMA Clear Diffuser Increase Efficiency Of The Fixture.
- "Weatherprotect" Outdoor Rated Powder Coating.
- "Long Life" Thermal Management.

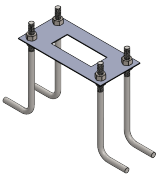
CV Benefits

- (24 V - Low Voltage)
- Maximum Driver Distance Option. (Long Distance Remote Driver Location)
- Easy Maintenance, Common Driver For Many Fixtures.
- "Human Safe Design" Low Voltage Across Landscape.

Family	Type	Code	Wattage	CRI	Optics	CCT	Fixture Finish	Supply	Accessories
SETTE	BO	60-600mm ht. 90-900mm ht.	14- 14w 18 - 18w	8 - 80 CRI	T1-148 x 107°(Eliptical) "T2-158 x 110° (Forward Through)"	30- 3000K 40- 4000K	G-Graphite Grey B-Black W-White C - Corton G - Dark leaf Green	230 - 230vAC 24-24vDC	-

Code Example :- SETTE_BO_60_14_8_T1_30_G_Ac

Accessories



Foundation Kit
GPREC-150x75/JB4-8x150